



# Intelligent tracked moving vehicle target

[www.lomah-target.com](http://www.lomah-target.com)

— — RIZHAO FZH INTERNATIONAL TRADE CO., LTD.  
MANUFACTURER OF SHOOTING TARGET SYSTEM

# C a t a l o g

1 Working principle

2 System composition

3 System advantage

4 System function

5 Main combat technical indicators

6 Complete set configuration

7 Product picture

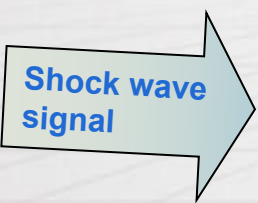
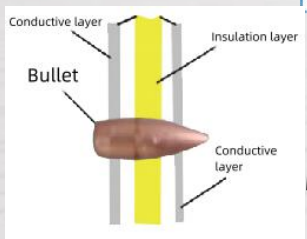
8 Application cases



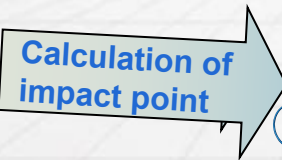
# 1. Operating principle



**The intelligent tracked moving vehicle target** utilizes multiple layers of conductive material with an insulating layer in the middle. When a bullet passes through it, it instantly conducts and calculates the position of the bullet point through the conduction signal, achieving precise target reporting in the area. A comprehensive target training system composed of a direct drive tracked vehicle chassis, target lifting device, communication control system, etc. It supports a one-stop multi machine mode, with tactical coordination actions between multiple machines. It can be customized according to customer needs, and the modules are independent of each other for easy disassembly and transportation.



Information collection processor



Communication controller



Master server



Printer





## 2. System composition



The intelligent tracked moving vehicle target is a comprehensive light weapon shooting training system suitable for target training and combat exercises in military units, armed police, and other departments. Capable of meeting the shooting needs of using light weapons against individual or group targets, and recording and evaluating shooting results.

The direct drive tracked chassis is suitable for indoor and outdoor ground travel. Has high load capacity and excellent off-road performance. Excellent ground adaptability. Especially suitable for large outdoor training venues such as Gobi, hills, gravel and other road surfaces.

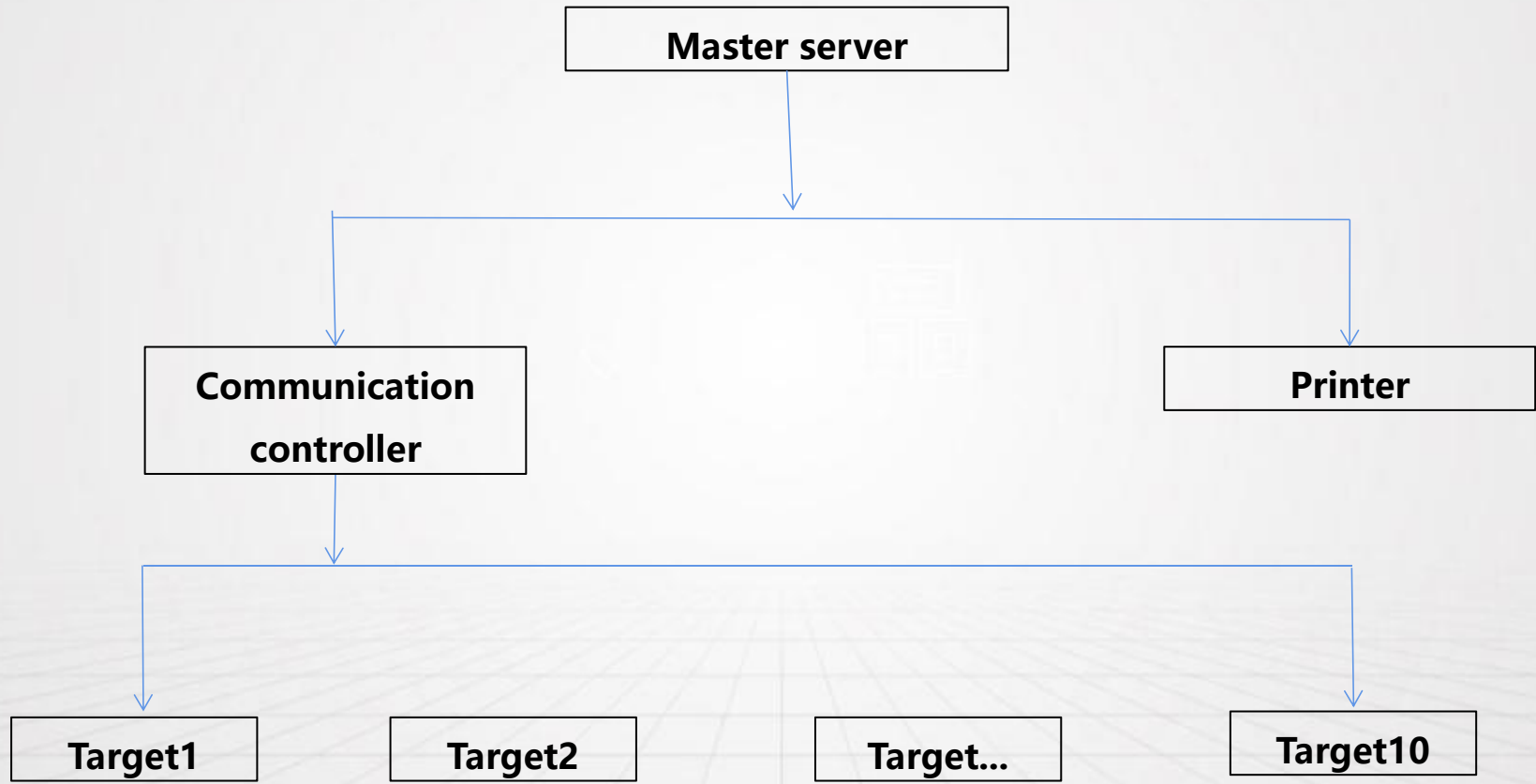


Intelligent tracked moving vehicle target





# System composition





# 3. System advantage



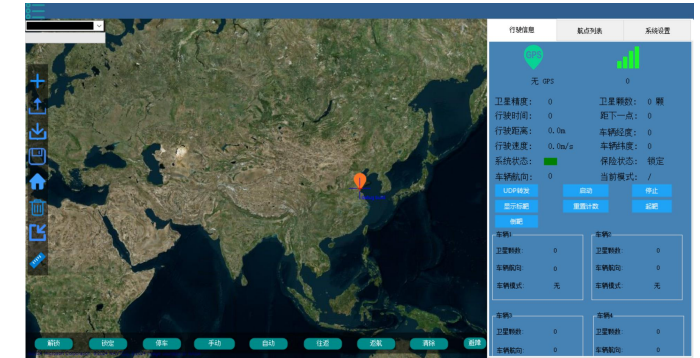
## 1. Capacitive on/off target reporting

Install two or more layers of isolated conductive materials on the target. When the bullet hits the target surface, a momentary short circuit state occurs. When the bullet passes through the target surface, the target surface returns to an open circuit state, and then the target is accurately reported through the target detection circuit.



## 2. Suitable for multiple calibers

Suitable for targeting multiple firearms and ammunition types with multiple calibers such as 5.8mm, 7.62mm, 12.7mm, etc. Suitable for training in different scenarios.



## 3. Support electronic fence and positioning

Can be configured with electronic fence for shooting range, obstacle electronic fence, personnel information, and task information, and can provide information exchange functions for downloading, synchronizing, and uploading the above information for handheld control terminals.



# 4. System function

**Simulate real environment** 1

It can provide various combat environments such as indoor corridor mode, conference ambush mode, and random encounter mode, providing important simulation training techniques to improve the live fire shooting level of soldiers in real combat environments.

**Radar obstacle avoidance function** 2

The intelligent tracked moving vehicle target is equipped with radar obstacle avoidance function, which has the ability to actively avoid and detour objects in front of it.

**Simulate sports behavior** 3

It can simulate the movement and behavior of a single body, and can simulate the basic state of the human body after being hit by a light weapon bullet (such as when hitting a fatal location, the target stops moving in place).





# System function



04

## Movement mode

**Target vehicle movement and target up and down movements can be controlled through manual remote control, as well as autonomous movement and target up and down movements according to preset motion paths and speeds;**  
**The target moves along the set fixed route; Can achieve automatic reciprocating motion between the starting and ending positions according to planning instructions.**

05

## Software control functions

**The intelligent tracked moving vehicle target realizes human-machine interaction between robot target vehicles and 1-station 6-vehicle control functions, mainly including real-time monitoring of driving status parameters, modification of driving mode, online binding and switching of routes, online switching of control modes, information management of training personnel, and statistics of target hitting situations.**

06

## Training Information Management

**The centralized control equipment can input, edit, and delete information about trainees, training courses, training plans, etc. It can also query and print shooting scores.**





# 5. Main combat technical indicators

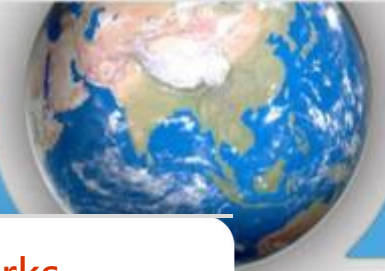


No.	Item	Parameter
1	Applicable target type	Multiple universal target types including human body target, head target, chest target, body target, etc
2	Applicable gun type	Various types of light weapons such as rifles, sniper rifles, and light machine guns
3	Applicable caliber	5mm-130mm
4	Applicable bullet speed	100m/s~1500m/s
5	Positioning and orientation accuracy	Positioning accuracy reaches centimeter level, and orientation accuracy is 0.2 °
6	Continuous capture volume	≤ 10 rounds
7	Target accuracy	≥99.5%
8	Target accuracy error	≤5cm
9	Wireless control distance	1-800m
10	Maximum operating speed	12KM/h
11	Target response time	≤0.5s





## 6 . Complete set configuration



No.	Part Name	Quantity,	Unit	Remarks
1	Master server	1	PC	Including software
2	Communication control system	1	SET	
3	Intelligent wheeled moving target vehicle	1	PC	
4	Power supply battery pack	1	SET	
5	Power charger	1	PC	
6	Remote control	1	PC	
7	Target plate	1	SET	
8	High-frequency antenna	1	PC	2.4GHZ
9	User manual	1	PC	
10	Spare parts kit	1	PC	
11	Packaging box	1	PC	Wooden box



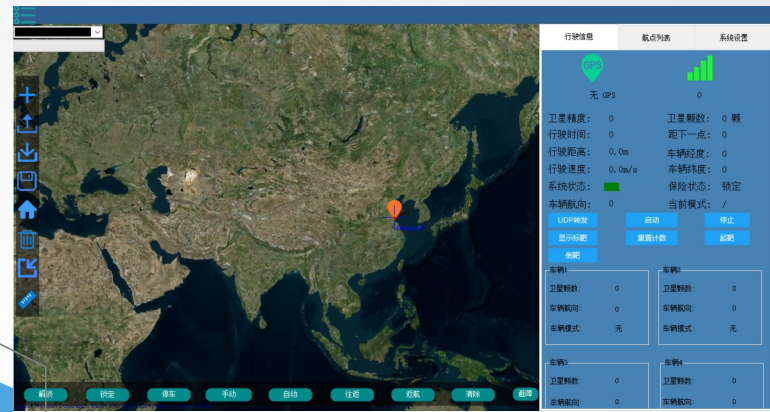
# 7 . Product picture



Physical installation diagram of the entire target



System software control

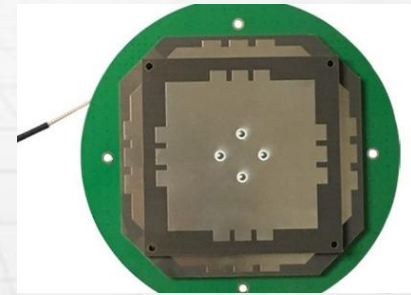


Product picture

Remote control



Communication system





# 8 . Application cases

